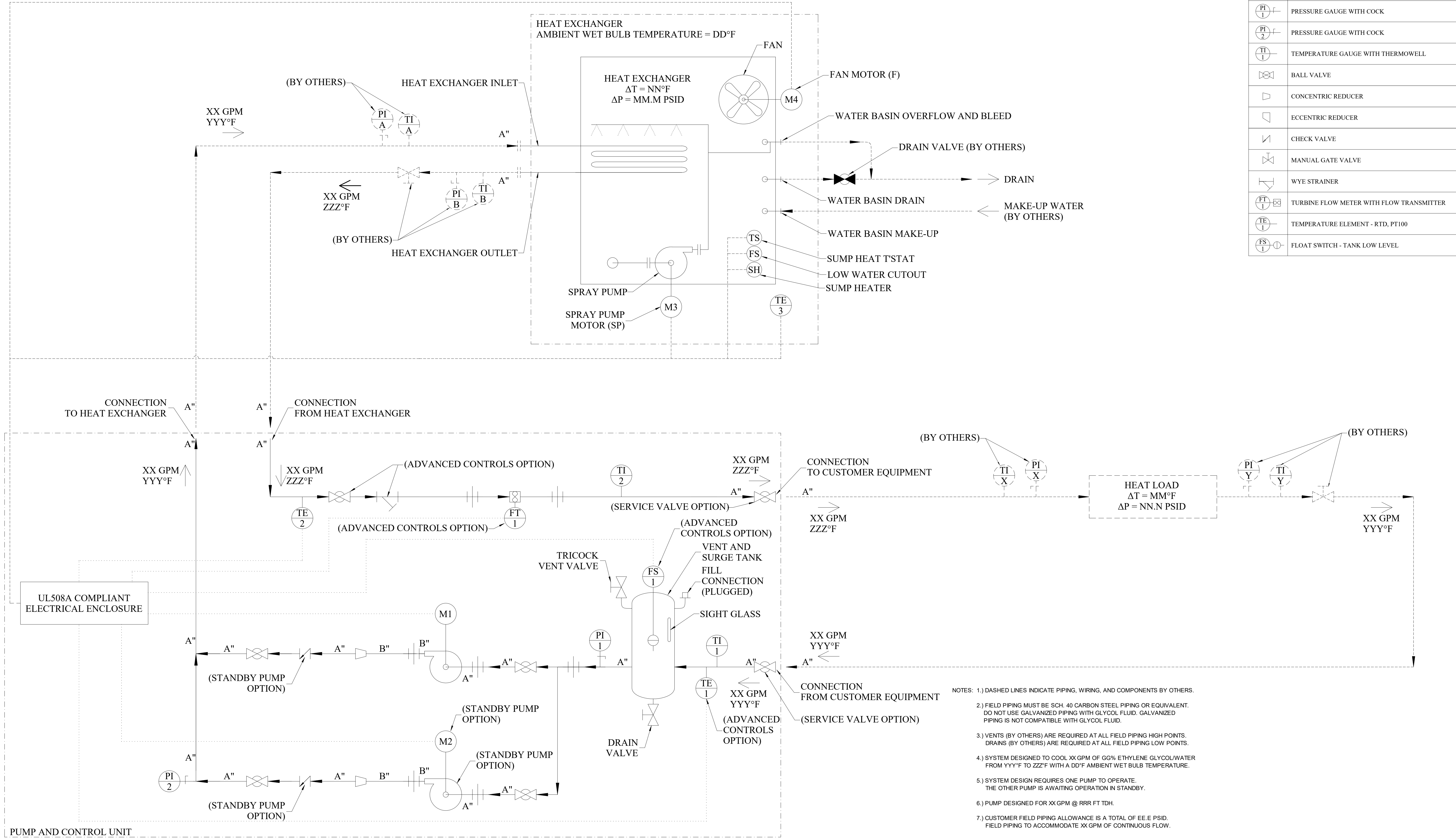


LEGEND	
ITEM	DESCRIPTION
	PUMP, CLOSE COUPLED CENTRIFUGAL, TEFC MOTOR
	PRESSURE GAUGE WITH COCK
	PRESSURE GAUGE WITH COCK
	TEMPERATURE GAUGE WITH THERMOWELL
	BALL VALVE
	CONCENTRIC REDUCER
	ECCENTRIC REDUCER
	CHECK VALVE
	MANUAL GATE VALVE
	WYE STRAINER
	TURBINE FLOW METER WITH FLOW TRANSMITTER
	TEMPERATURE ELEMENT - RTD, PT100
	FLOAT SWITCH - TANK LOW LEVEL



- NOTES:
- 1.) DASHED LINES INDICATE PIPING, WIRING, AND COMPONENTS BY OTHERS.
 - 2.) FIELD PIPING MUST BE SCH. 40 CARBON STEEL PIPING OR EQUIVALENT. DO NOT USE GALVANIZED PIPING WITH GLYCOL FLUID. GALVANIZED PIPING IS NOT COMPATIBLE WITH GLYCOL FLUID.
 - 3.) VENTS (BY OTHERS) ARE REQUIRED AT ALL FIELD PIPING HIGH POINTS. DRAINS (BY OTHERS) ARE REQUIRED AT ALL FIELD PIPING LOW POINTS.
 - 4.) SYSTEM DESIGNED TO COOL XX GPM OF GG% ETHYLENE GLYCOL/WATER FROM YYY°F TO ZZZ°F WITH A DD°F AMBIENT WET BULB TEMPERATURE.
 - 5.) SYSTEM DESIGN REQUIRES ONE PUMP TO OPERATE. THE OTHER PUMP IS AWAITING OPERATION IN STANDBY.
 - 6.) PUMP DESIGNED FOR XX GPM @ RRR FT TDH.
 - 7.) CUSTOMER FIELD PIPING ALLOWANCE IS A TOTAL OF EE.E PSID. FIELD PIPING TO ACCOMMODATE XX GPM OF CONTINUOUS FLOW.
 - 8.) PUMP SKID INTERNAL VOLUME APPROXIMATELY WW GALLONS.
 - 9.) ONE HEAT EXCHANGER SUPPLIED. INTERNAL VOLUME APPROXIMATELY QQ GALLONS.
 - 10.) TEMPERATURE ELEMENT 3 TO BE FIELD INSTALLED NEAR HEAT EXCHANGER, OUT OF DIRECT SUNLIGHT, AND AWAY FROM WARM DISCHARGE AIR.
 - 11.) HEAT EXCHANGER WATER TREATMENT AND BLEED RATE BY OTHERS.

BY	RS
DATE	2-3-25
HYDROTHRIFT CORPORATION	
MODEL	CLOSED-LOOP EVAPORATIVE -TYPE (CE) COOLING SYSTEM
SCALE	NONE
SHEET	1 OF 1
TITLE	PROCESS & FLOW DIAGRAM
DRAWING NUMBER	PFDSTD-CE
REV.	A

WARNING: This document may contain sensitive and/or proprietary information and therefore must be treated as a confidential document. Acceptance of this document constitutes an agreement that this document and the information contained herein shall be maintained and transmitted in a confidential manner. No part of this document shall be reproduced, released or distributed without the express written permission of HydroThrift Corporation