





# Specifications

## Electric motor & Fan data\*

Model	CFM	Sound dB(A)* at 7 FT	HP	Volts	Phase	Full Load Amps	HZ	Nema Frame	RPM	Type	Circuit	Thermal Overload	Bearing B-Ball
AOF-5	465	68	1/6	115/208-230	1	4/2.1-2	60	48	1725	TEFC	C	No	B
	494	70	1/4	208-230/460	3	1.4-1.3/65	60	48	1725	TEFC	D	No	B
AOF-10	669	68	1/6	115/208-230	1	4/2.1-2	60	48	1725	TEFC	C	No	B
	710	70	1/4	208-230/460	3	1.4-1.3/65	60	48	1725	TEFC	D	No	B
AOF-15	956	69	1/4	115/208-230	1	5.8/3-2.9	60	48	1725	TEFC	C	No	B
	1015	71	1/4	208-230/460	3	1.4-1.3/65	60	48	1725	TEFC	D	No	B
AOF-20	1460	70	1/2	115/208-230	1	7.8/4.1-3.9	60	48	1725	TEFC	C	No	B
	1555	72	1/2	208-230/460	3	2.1-2/1.	60	48	1725	TEFC	D	No	B
AOF-25	2160	72	1/2	115/208-230	1	8/4.2-4	60	56	1140	TEFC	C	No	B
	2240	73	1/2	208-230/460	3	2.5-2.4/1.2	60	56	1140	TEFC	D	No	B
AOF-30	2990	75	1/2	115/208-230	1	8/4.2-4	60	56	1140	TEFC	C	No	B
	3100	76	1/2	208-230/460	3	2.5-2.4/1.2	60	56	1140	TEFC	D	No	B
AOF-35	Not Available				1	4-3.8/1.9	60	56	1140	TEFC	D	No	B
	4370	77	1	208-230/460	3	4-3.8/1.9	60	56	1140	TEFC	D	No	B
AOF-40	Not Available				1	4-3.8/1.9	60	56	1140	TEFC	D	No	B
	5450	79	1	208-230/460	3	4-3.8/1.9	60	56	1140	TEFC	D	No	B

\*Published electrical ratings are approximate, and may vary because of motor brand. Actual ratings are on motor nameplate.

\*\*Catalog dB(A) sound levels are at seven (7) feet. dB(A) sound levels increase by six (6) dB(A) for halving this distance and decrease by six (6) dB(A) for doubling this distance.

## Explosion Proof Motors (Class I GP.D & Class II GP.F, G)\*

Model	CFM	Sound dB(A)* at 7 FT	HP	Volts	Phase	Full Load Amps	HZ	Nema Frame	RPM	Type	Circuit	Thermal Overload	Bearing B-Ball
AOF-5	494	68	1/4	115/230	1	5.8/2.9	60	48	1725	FC	C	Yes	B
	494	70	1/4	208-230/460	3	1.4-1.3/65	60	48	1725	FC	D	Yes	B
AOF-10	710	68	1/4	115/230	1	5.8/2.9	60	48	1725	FC	C	Yes	B
	710	70	1/4	208-230/460	3	1.4-1.3/65	60	48	1725	FC	D	Yes	B
AOF-15	1015	69	1/4	115/230	1	5.8/2.9	60	48	1725	FC	C	Yes	B
	1015	71	1/4	208-230/460	3	1.4-1.3/65	60	48	1725	FC	D	Yes	B
AOF-20	1555	70	1/2	115/230	1	7.8/3.9	60	48	1725	FC	C	Yes	B
	1555	72	1/2	208-230/460	3	2.1-2/1.	60	48	1725	FC	D	Yes	B
AOF-25	2240	72	1/2	115/230	1	8/4.	60	56	1140	FC	C	Yes	B
	2240	73	1/2	230/460	3	2.5-2.4/1.2	60	56	1140	FC	D	Yes	B
AOF-30	3100	75	1/2	115/230	1	8/4.	60	56	1140	FC	C	Yes	B
	3100	76	1/2	230/460	3	2.5-2.4/1.2	60	56	1140	FC	D	Yes	B
AOF-35 ▲	Not Available				1	3.8/1.9	60	56	1140	FC	D	No	B
	4370	77	1	230/460	3	3.8/1.9	60	56	1140	FC	D	No	B
AOF-40 ▲	Not Available				1	3.8/1.9	60	56	1140	FC	D	No	B
	5450	79	1	230/460	3	3.8/1.9	60	56	1140	FC	D	No	B

▲ = AOF 35 & 40, CL. 1, GP. D only **TEFC** = Totally enclosed, fan cooled **FC** = Fan cooled **C** = Capacitor start - Induction run **D** = Squirrel cage

\*Published electrical ratings are approximate, and may vary because of motor brand. Actual ratings are on motor nameplate.

## 575 Volt Specifications

Model	CFM	Sound dB(A)** at 7 FT	HP	Volts	Phase	Full Load Amps	HZ	Nema Frame	RPM	Type	Circuit	Thermal Overload	Bearing B-Ball
AOF-5	494	70	1/4	575	3	.52	60	48	1725	TEFC	D	No	B
AOF-10	710	70	1/4	575	3	.52	60	48	1725	TEFC	D	No	B
AOF-15	1015	71	1/4	575	3	.52	60	48	1725	TEFC	D	No	B
AOF-20	1555	72	1/4	575	3	.80	60	48	1725	TEFC	D	No	B
AOF-25	2240	73	1/2	575	3	.88	60	56	1140	TEFC	D	No	B
AOF-30	3100	76	1/2	575	3	.88	60	56	1140	TEFC	D	No	B
AOF-35	4370	77	1	575	3	1.6	60	56	1140	TEFC	D	No	B
AOF-40	5450	79	1	575	3	1.6	60	56	1140	TEFC	D	No	B

\*Catalog dB (A) sound levels at seven (7) feet. dB (A) sound levels increase by six (6) dB (A) for halving this distance, and decrease by six (6) dB (A) for doubling this distance.

## C<sub>v</sub> Viscosity Correction

Average Oil Temp °F	OIL					
	SAE 5 110 SSU at 100°F 40 SSU at 210°F	SAE 10 150 SSU at 100°F 43 SSU at 210°F	SAE 20 275 SSU at 100°F 50 SSU at 210°F	SAE 30 500 SSU at 100°F 65 SSU at 210°F	SAE 40 750 SSU at 100°F 75 SSU at 210°F	50-50 Ethylene Glycol & Water
100	1.14	1.22	1.35	1.58	1.77	1.11
150	1.01	1.05	1.11	1.21	1.31	1.02
200	.99	1.00	1.01	1.08	1.10	.96
250	.95	.98	.99	1.00	1.00	.95

# Specifications

## Net Weight (LBS)

Model	Weight
AOF-5	47
AOF-10	62
AOF-15	72
AOF-20	86
AOF-25	120
AOF-30	135
AOF-35	160
AOF-40	185

## One Pass (Medium to High Oil Flows)

Model	Flow Range GPM (USA)
AORF - 5-1	2 - 80
AORF - 10-1	3 - 80
AORF - 15-1	4 - 80
AORF - 20-1	5 - 80
AORF - 25-1	6 - 100
AORF - 30-1	7 - 100
AORF - 35-1	8 - 112
AORF - 40-1	9 - 118

## Two Pass (Low to Medium Oil Flows)

Model	Flow Range GPM (USA)
AORF - 5-2	2 - 25
AORF - 10-2	2 - 30
AORF - 15-2	2 - 30
AORF - 20-2	2 - 40
AORF - 25-2	2 - 40
AORF - 30-2	2 - 40
AORF - 35-2	3 - 40
AORF - 40-2	4 - 40

## Replacement Air Filters

Model	Fiberglass Disposable Type Part Number	Aluminum Washable Type Part Number
AOF - 5	65528	65559
AOF - 10	65530	65560
AOF - 15	65507	65561
AOF - 20	65532	65562
AOF - 25	65519	65563
AOF - 30	65535	65564
AOF - 35	65537	65565
AOF - 40	65543	65566

## C<sub>v</sub> Viscosity Correction

Average Oil Temp °F	OIL					
	SAE 5 110 SSU at 100°F 40 SSU at 210°F	SAE 10 150 SSU at 100°F 43 SSU at 210°F	SAE 20 275 SSU at 100°F 50 SSU at 210°F	SAE 30 500 SSU at 100°F 65 SSU at 210°F	SAE 40 750 SSU at 100°F 75 SSU at 210°F	50-50 Ethylene Glycol & Water
100	1.14	1.22	1.35	1.58	1.77	1.11
150	1.01	1.05	1.11	1.21	1.31	1.02
200	.99	1.00	1.01	1.08	1.10	.96
250	.95	.98	.99	1.00	1.00	.95

## Lubrication Notes

**Caution:** Do not over oil or over grease. **Ball bearings** – No grease needed at start up. Grease as follows:

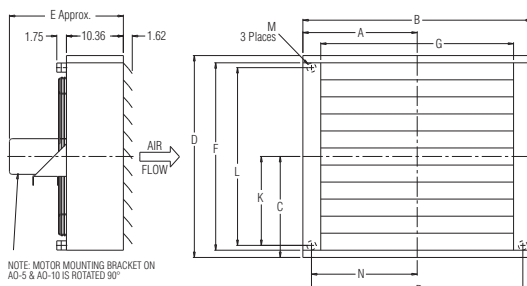
5,000 Hours/Year	5 Year Grease Interval
Continuous — Normal Applications	2 Years
Seasonal Service — Motor is idle for 6 months or more	1 Year
Continuous — High ambients, dirty or moist locations, high vibration	6 Months

## Dimensions

For 3D models and spec sheets visit the **AO - Industrial** page on our website. <https://www.thermaltransfer.com/product/ao-series>

Model	A	B	C	D	E	F	G	H	J	K	L	M		N	P	Q	R	S	T
												NPT Male	SAE Female						
AOF-5	7.40	14.81	5.90	11.81	17.50	9.19	8.31	6.47	12.94	3.78	7.69	1"	#16 SAE	5.84	11.69	10.06	1.09	3.92	—
AOF-10	9.50	19.00	6.56	13.12	17.00	10.50	12.50	8.56	17.12	4.44	8.88	1"	#16 SAE -12UN-2B Thread	7.94	15.88	14.38	1.09	3.92	—
AOF-15	10.19	20.38	7.87	15.75	17.62	13.12	13.88	9.25	18.50	5.75	11.50	1"		8.62	17.25	15.62	1.09	3.92	—
AOF-20	11.91	23.81	9.19	18.38	19.62	15.75	17.91	10.90	21.81	7.00	14.00	1 1/4"	#20 SAE -12UN-2B Thread	10.28	20.56	18.62	1.09	3.92	—
AOF-25	13.34	26.68	11.81	23.62	20.68	21.00	20.19	12.40	24.81	9.62	19.25	1 1/4"		11.78	23.56	21.62	1.09	3.92	—
AOF-30	15.81	31.62	13.78	27.56	20.12	24.94	25.12	14.87	29.75	11.59	23.19	1 1/4"		14.25	28.50	26.62	1.09	3.92	11.00
AOF-35	16.90	33.81	15.09	30.19	21.25	27.56	27.31	15.97	31.94	12.90	25.81	1 1/4"		15.34	30.69	28.88	1.09	3.94	11.00
AOF-40	20.18	41.62	18.37	36.75	20.31	34.12	35.12	19.87	39.75	16.19	32.38	1 1/4"	19.25	38.50	37.00	1.18	3.87	13.25	

NOTE: All dimensions in inches.



## Fan Rotation Clockwise/Facing Motor Shaft

